

# barcode label setup

## Avery 8257 – A 12 Digit Inventory Label



### Label Setup

1. From the SalonBiz®/SpaBiz® menu bar, click on the Blueprints icon.
2. Click on the Inventory button.
3. In the Table to Edit box, click on Barcode Labels.
4. To add this label, click on the Add button and type in Avery 8257.
5. To access this label, double click on the name or click once on the name and then click the Edit button.

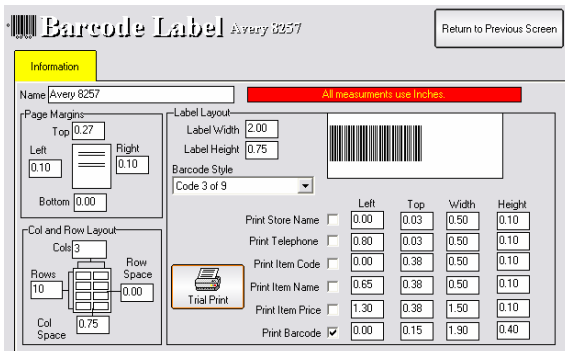
### Label Information

1. Page Margins:

Top:	0.27	Right:	0.10
Bottom:	0.00	Left:	0.10
2. Col and Row layout:

Col:	3	Row Space:	0.00
Row:	10	Col Space:	0.75
3. Label layout:

Label Width:	2.00
Label Height:	0.75
4. Select 3 of 9 in the Barcode Style drop down menu.



### Print Options

1. Select all which you would like to have displayed on the label
2. Starting with LEFT (going down):
  - ☞ 0.00, 0.80, 0.00, 0.65, 1.30, 0.00
3. Starting with TOP (going down):
  - ☞ 0.03, 0.03, 0.38, 0.38, 0.38, 0.15
4. Starting with Width (going down):
  - ☞ 0.50, 0.50, 0.50, 0.50, 1.50, 1.90
5. Starting with Height (going down)
  - ☞ 0.10, 0.10, 0.10, 0.10, 0.10, 0.40

❖ You can also look for Avery 5667 they have the same preset measurements but are clear labels.

### Customer Support 888.809.2802

Our Customer Support team is ready to assist you.



303 S. Pine St. < Hammond, LA 70403

[extendedtechnologies.com](http://extendedtechnologies.com)

< 888.809.2802 sales < 800.632.5527