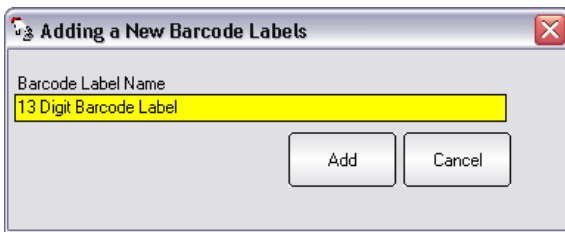


barcode label setup

13 Digit Barcode



Label Setup

1. From the SalonBiz®/SpaBiz® menu bar, click on the Blueprints icon.
2. Click on the Inventory button.
3. In the Table to Edit box, click on Barcode Labels.
4. To add this label, click on the Add button and type in 13 Digit Barcode Label.
5. To access this label, double click on the name or click once on the name and then click the Edit button.

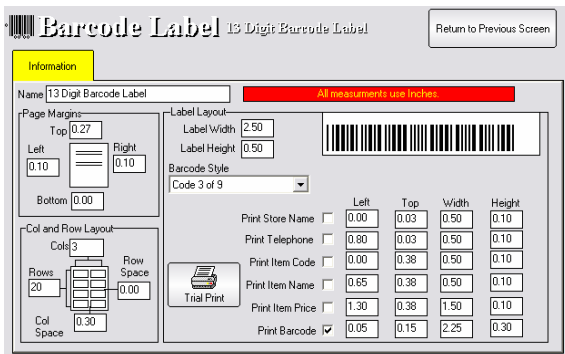
Label Information

1. Page Margins:

Top:	0.27	Right:	0.10
Bottom:	0.00	Left:	0.10
2. Col and Row layout:

Col:	3	Row Space:	0.00
Row:	20	Col Space:	0.30
3. Label layout:

Label Width:	2.50
Label Height:	0.50
4. Select 3 of 9 in the Barcode Style drop down menu.



Print Options

1. Select all which you would like to have displayed on the label
2. Starting with LEFT (going down):
 - ↻ 0.00, 0.80, 0.00, 0.65, 1.30, 0.05
3. Starting with TOP (going down):
 - ↻ 0.03, 0.03, 0.38, 0.38, 0.38, 0.15
4. Starting with Width (going down):
 - ↻ 0.50, 0.50, 0.50, 0.50, 1.50, 2.25
5. Starting with Height (going down)
 - ↻ 0.10, 0.10, 0.10, 0.10, 0.10, 0.30

Customer Support 888.809.2802

Our Customer Support team is ready to assist you.



303 S. Pine St. < Hammond, LA 70403

extendedtechnologies.com

< 888.809.2802 sales < 800.632.5527